

UTILITY and TRANSPORTATION CONTRACTOR



**West Bay Construction Begins
Second Decade In Construction**

WEST BAY CONSTRUCTION BEGINS SECOND DECADE IN CONSTRUCTION

Firm Establishes Exemplary Record In The Industry

New Jersey general contractors boast about the fact that our state's heavy-highway subcontractors are some of the nation's best. One such firm, West Bay Construction, recently completed its first decade in construction and established a reputation for performing quality work and completing responsibilities in a timely manner while working with several major general contractors.

The founder of West Bay Construction, Frank Corradetti, P.E., is a civil engineering graduate of Rutgers University who got his start in construction in Washington, DC for a local contractor following college. His initial efforts in the business involved structural sheeting. After two years, Corradetti joined the firm of Ole Hansen & Son where he was involved in heavy construction for the company and eventually became vice-president.

After being active in construction for most of the last century, the Hansen firm closed its doors in the early 1990's, and Frank Corradetti formed his own firm in Somers Point, working from his home with the assistance of his wife, Linda, who continues to work with the firm from its offices in Somers Point. Corradetti's prior experience served him well as he was especially equipped to meet the challenges of operating his own company.

West Bay Construction completed 12 projects during its first year in business. The work involved curb, sidewalk, concrete repairs, drainage and some site work. These projects were completed as a subcontractor, or directly for municipalities, in Atlantic and Cape May counties with the largest contract involving approximately \$70,000 in concrete activities. West Bay was off to a great start and has continued to complete numerous projects annually.

Within two years, the firm expanded its market to also include work in Gloucester, Cumberland and Camden counties. This work was often performed as a subcontractor and included the construction of timber bridge foundations, test pile installations,



Veterans Memorial Park constructed by West Bay Construction in Pleasantville.



West Bay personnel complete concrete placement in conjunction with water main installation.

storm drainage and a pedestrian bridge installation.

During 1997 West Bay Construction completed its largest project at that time, a

\$300,000 contract for the Wildwood Crest Board of Education which involved the construction of athletic fields. While the firm was completing this work, other projects were completed that involved drainage, emergency pier repairs, irrigation installation for other athletic fields and a parking lot at the Atlantic City Airport.

At about this time in West Bay's development, the firm was invited to bid work for PSE&G in areas of South Jersey. Since then the company has been the low bidder for several contracts with the utility that have involved concrete repairs and road improvements. This was also a time when West Bay Construction began to complete subcontractor work for IEW Construction Group. These efforts have involved bridge deck spall repairs, drainage, site improvements and bridge rehabilitations.

Last year West Bay received considerable praise for its construction of Veterans Memorial Park in Pleasantville as the work included some unique installations. The company also recently completed installation of water mains in Brigantine, construction of pump station foundations for the US Coast Guard in Wildwood and NJ Turnpike Service Plaza improvements at Interchange 4 and 6 as a subcontractor.

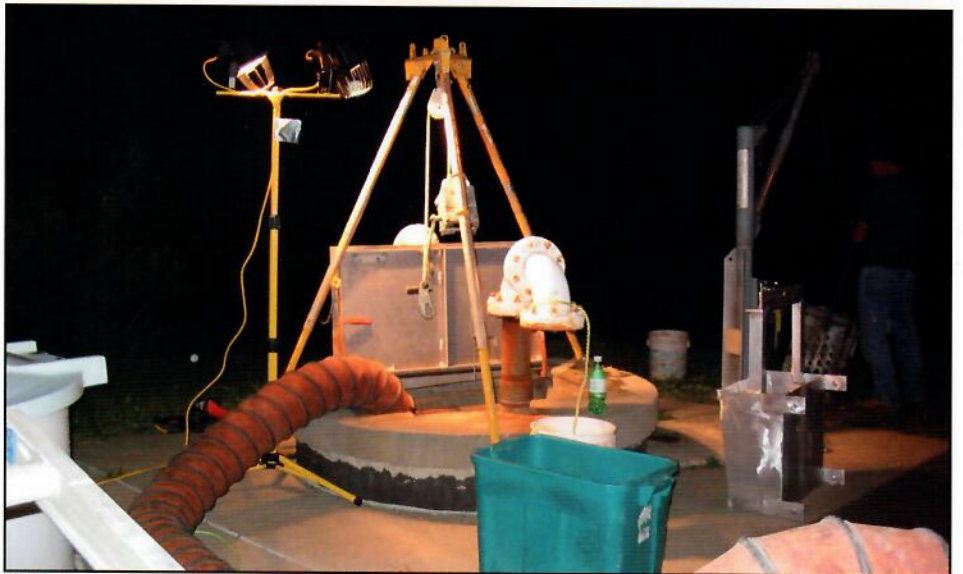
West Bay Construction has kept especially busy over the past two years as a subcontractor in areas of southern New Jersey for IEW Group, Arawak Paving, A.E. Stone, South State, Richard Pierson Construction and Feriozzi Concrete. In addition, West Bay is currently completing various drainage work in Cape May County and the re-development of a well and piping for Wellhouse #1 in Berlin.

Along with his wife, Linda, several key employees have assisted Frank Corradetti in growing his company and achieving such success. Kevin Blevin is the firm's superintendent and with the company for eight years. With West Bay for two years is Brian Southwick who serves as project manager. During the year, the company employs about 15 people on its projects.

Frank Corradetti has much to be proud about when it comes to the success of his company over the past ten years. His firm has not only responded to numerous construction challenges over the years, but West Bay has developed positive relationships with several major general contractors as its reputation for providing quality construction has gained considerable attention within the industry.



Water separator installed at the NJ National Guard facility in Vineland.



West Bay recently completed the rehabilitation of several NJ Highway Authority pump stations.



Junction box installed by West Bay for PSE&G.